



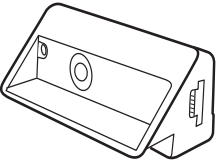


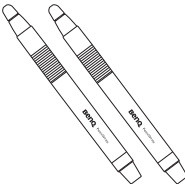
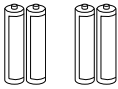
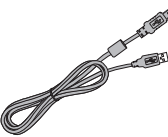
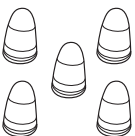
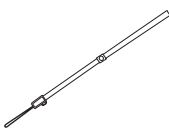
PointWrite User Manual

Table of contents

Shipping contents.....	3
Prepare for setup.....	4
Environmental condition	4
Instructions for surface.....	5
Camera Installation on Projector	7
About PointWrite Pen	8
Installing the batteries.....	8
Replacing the pen tip.....	8
Driver Installation.....	9
Driver installation complete.....	10
Running the PointWrite	11
Start for interactive function	12
Configuration setting.....	12
Alignment instructions.....	13
PointWrite Calibration.....	14
Calibration complete	15
Specifications	16

Shipping contents

The PointWrite is a built in Interactive Whiteboard on the projector. To use the PointWrite correctly, please find the standard accessories below and follow the instructions in this manual.

<p>1</p> 	<p>2</p> 	<p>3</p> 
<p>PointWrite</p>	<p>Installation CD</p>	<p>Quick manual</p>
<p>4</p> 	<p>5</p> 	<p>6</p> 
<p>Two PointWrite pens</p>	<p>Two sets of batteries</p>	<p>Mini USB cable</p>
<p>7</p> 	<p>8</p> 	
<p>Extra pen tips</p>	<p>Wrist strip</p>	

1. PointWrite: Interactive Whiteboard Sensor.
2. Installation CD: CD contains PointWrite driver, QWrite software and user manual.
3. Quick Start Guide: Short cut of how to use the PointWrite.
4. Two PointWrite Pens: PointWrite Pen is a pen type wireless mouse. Before using the pen, insert the batteries into the pen.
5. Batteries: AAA size batteries.
6. Mini USB Cable: Connects the PointWrite to PC.
7. Extra Pen Tips
8. Wrist strip

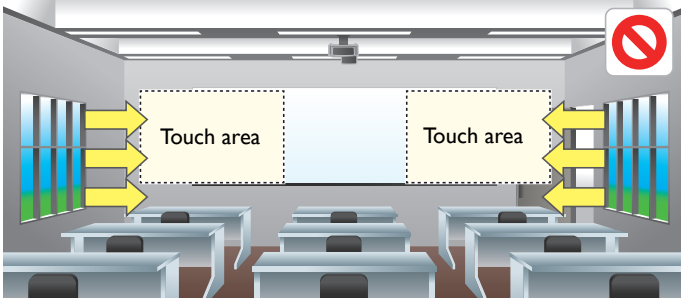
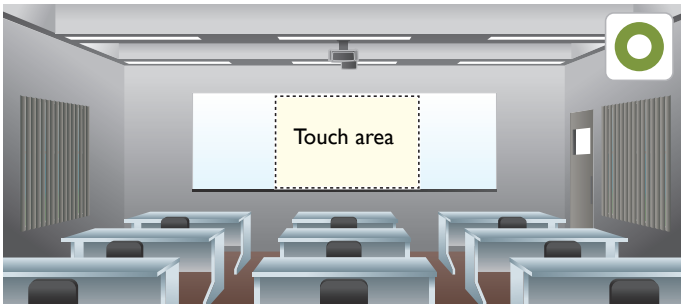
Prepare for setup

Environmental condition

For an BenQ projector with the scalable interactive functionality, transforming any flat surface into a virtual interactive whiteboard.

For an optimal interactive writing quality, follow these guidelines:

1. Close window curtains.
2. Select a projection area away from direct sunlight to prevent writing interference.
3. Keep infrared devices, such as: infrared microphones, away from the front side of the screen to prevent interference.
4. Remove accessories, such as: watches or necklaces, with a reflective surface to prevent interference.

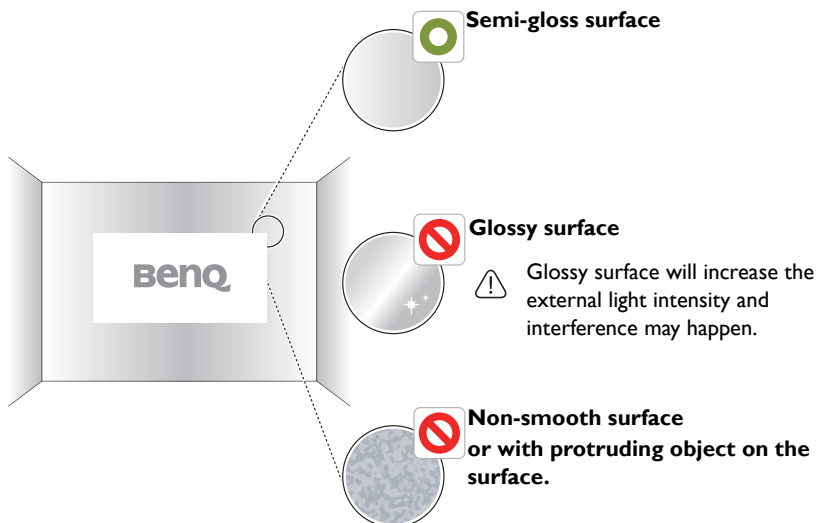


Instructions for surface

Optimal interactive quality will be dependent on the selected surface condition. It is important to choose a flat and non-reflective surface to secure the writing performance.

Selecting a wall surface

- Select a wall that is straight and flat, avoid any protruding objects on it.
- Project on a smooth, semi-gloss painted surface to reduce glare from the projector, to achieve optimal touch quality and to reduce wear on the pen nib.



Selecting a board surface


Attach a dry-erase board to the wall if you're projecting on a textured wall surface. A dry-erase board is a flat surface that works well with your interactive projector and allows you to write smoothly in digital ink.





Instructions for a board surface

Consider the following factors when selecting a board to project to optimized the interactive quality.

- The board surface require to be semi-glossy or matt.
- The board with glossy and reflected surface is not recommended, the surface will increase the external light intensity and unexpected interference may happen.

 **Caution:** For a existing glossy board, it is recommend to use the projection film to coverage the existing surface to get a better interactive quality.

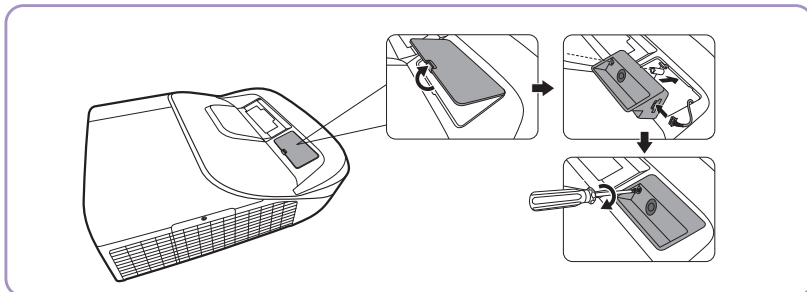
Comparison of the board surface

Surface	Board material	Performance
<div>Semi glossy/Matt</div> 	Dry erase board	Best! The surface will eliminate reflection intensity.
<div>Glossy</div> 	<ul style="list-style-type: none">•General whiteboard•With Galvanized steel•With Ceramic steel panel	Risk! Interference may happen during writing.

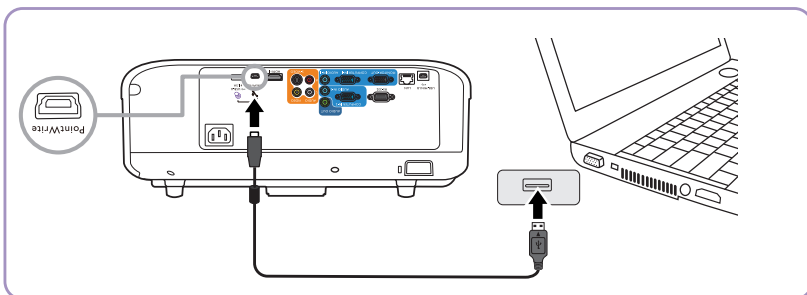
Camera Installation on Projector

The PointWrite camera is available for BenQ selected projector.

Make sure the PointWrite camera is installed properly before you active interactive function.



Use the USB cable¹ to connect the projector to PC. Plug the USB mini-B end into the projector and plug the USB type-A end into PC.



¹. A USB cable of 5 meters is provided. Use a USB repeater cable If you need to extend the length.

About PointWrite Pen

The PointWrite Pen provides the following 4 actions:


Click: Touch an icon or a menu on the screen.

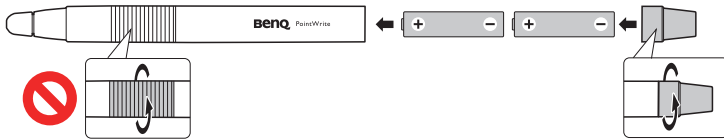
Double Click: Touch an icon or a menu on the screen two times.

Right Button Click: Touch an icon or menu for at least 1.5 seconds.

Drag: Touch and drag an object on the screen.

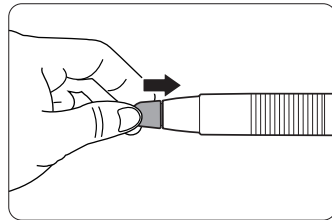
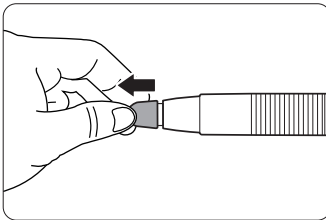
Installing the batteries

 **Caution:** When inserting the batteries into the PointWrite Pen, make sure the battery polarities are correct.



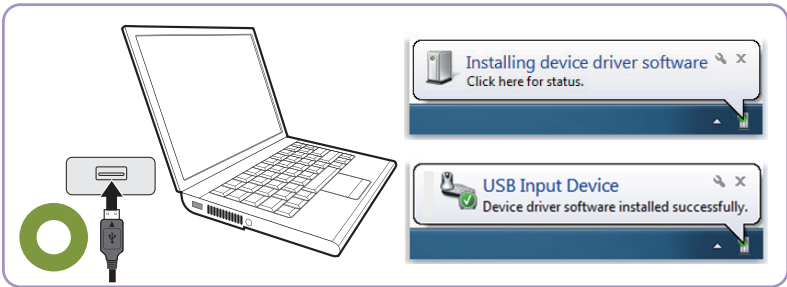
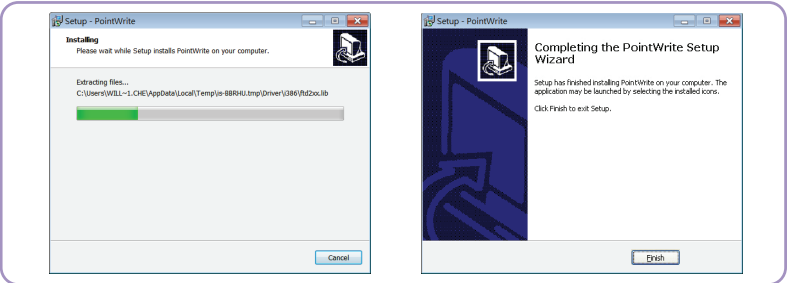
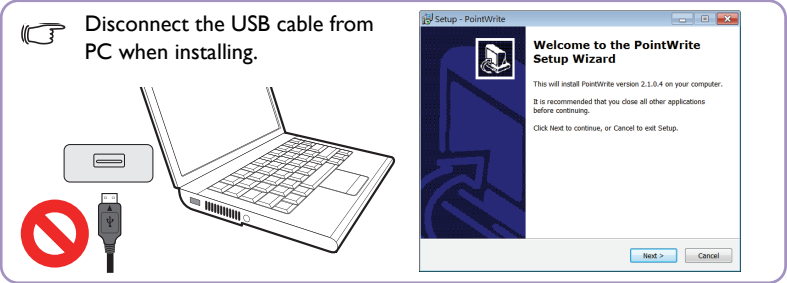
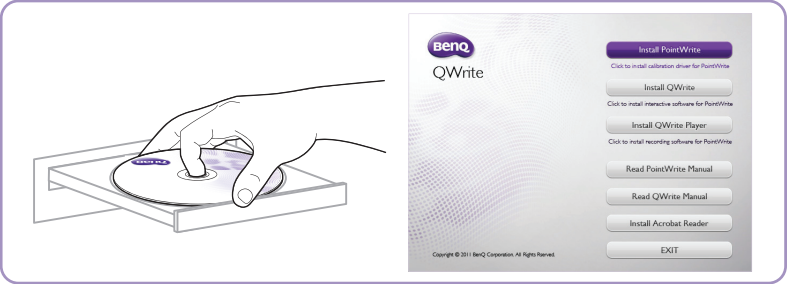
Replacing the pen tip

1. Removing the pen tip
Hold the pen tip with your fingers. Shake and pull the pen tip out of the pen.
2. Inserting the pen tip
Push the pen tip gently, but not abruptly.




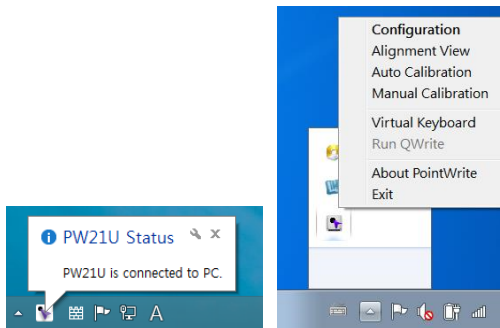
Driver Installation

Use the PointWrite driver in CD to enable the interactive function with PointWrite Pen.



Driver installation complete


- The PointWrite icon  will be created on the desktop.
- The installation folder will be created on C: directory.
- When running the PointWrite², the PointWrite icon appears on the system tray area.
- Click on the PointWrite icon on system tray area and a popup menu will appear:



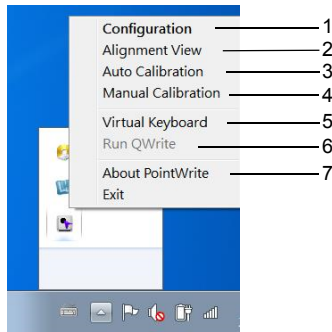
². When using the PointWrite for the first time, the configuration window will appear on the desktop to help you configure the PointWrite.

PointWrite pull-up menu

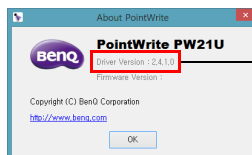
Running the PointWrite

After you double click on the PointWrite icon  on the desktop, the PointWrite will initiate and the PointWrite icon will be created on the system tray area.

Right click on the PointWrite icon on the system tray area and a pull-up menu appears.



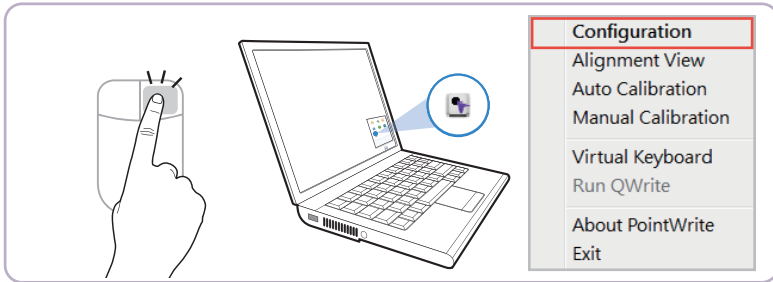
1. **Configuration:** Choose this when you want to change the installation position of the projector. To change the language, click on this menu and follow the steps on [page 12](#).
2. **Alignment View:** See "[Alignment instructions](#)" on [page 13](#) for details.
3. **Auto Calibration:** If the accuracy is not enough when using the PointWrite, execute the auto calibration again.
4. **Manual Calibration:** If the accuracy is not enough when using the PointWrite or the auto calibration fails, execute the manual calibration.
5. **Virtual Keyboard:** If keyboard input is needed, click on the "Virtual Keyboard" and then keyboard will appear on the screen.
6. **Run QWrite:** Choose this when you want to run the "QWrite".
7. **About PointWrite:** This menu provides the PointWrite version information. Click this menu, and then version information window will appear.



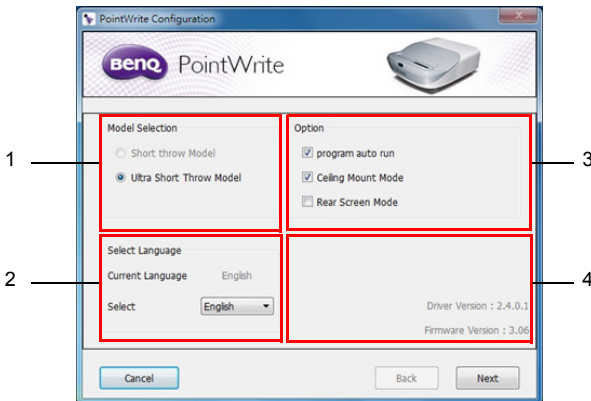
PointWrite Version Information

Start for interactive function

To use the PointWrite, the proper setting of the PointWrite configuration is needed. The Configuration setting window will help you to set up PointWrite correctly.



Configuration setting

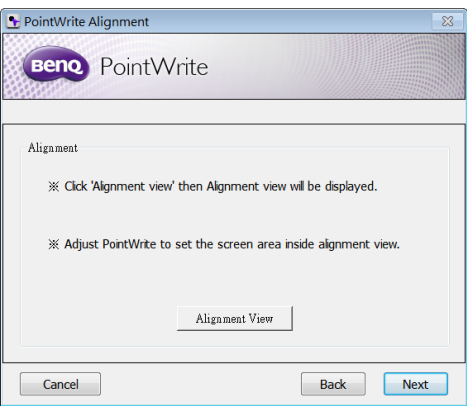


1. **PointWrite configuration:** Select the PointWrite type that you're going to use.
2. **PointWrite Language:** The default language is the same as the language for your operating system. If you want to change the language, click on Select English and then language list will display. **After selecting your preferred language, quit the PointWrite and start the PointWrite again.**
3. **PointWrite Option:**
 - **Program auto run:** Click this item if you want the PointWrite to run automatically when Windows starts.
 - **Ceiling Mount Mode:** Click this item if you mount the projector on the ceiling. When the projector is placed on the table, do not click this item.
 - **Rear Screen Mode:** If the projector is installed on the rear screen system, click this item.
4. **Information:** Shows the driver and camera firmware version.

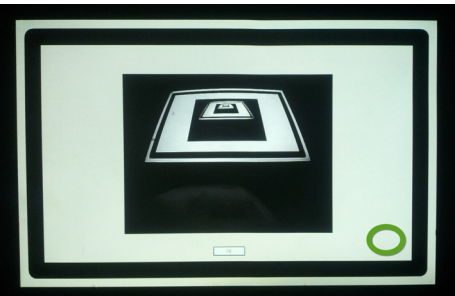
Alignment instructions

Alignement view

The PointWrite Alignment function is to set the orientation of the PointWrite to the screen.



Alignment View: When clicking on the “Alignment View”, the screen image is displayed on the alignment view as illustrated.



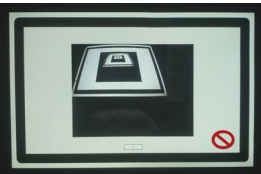
If the screen image is not in the center, the calibration will fail. Please make sure the PointWrite module is attached to the projector properly.



• Right side conflict



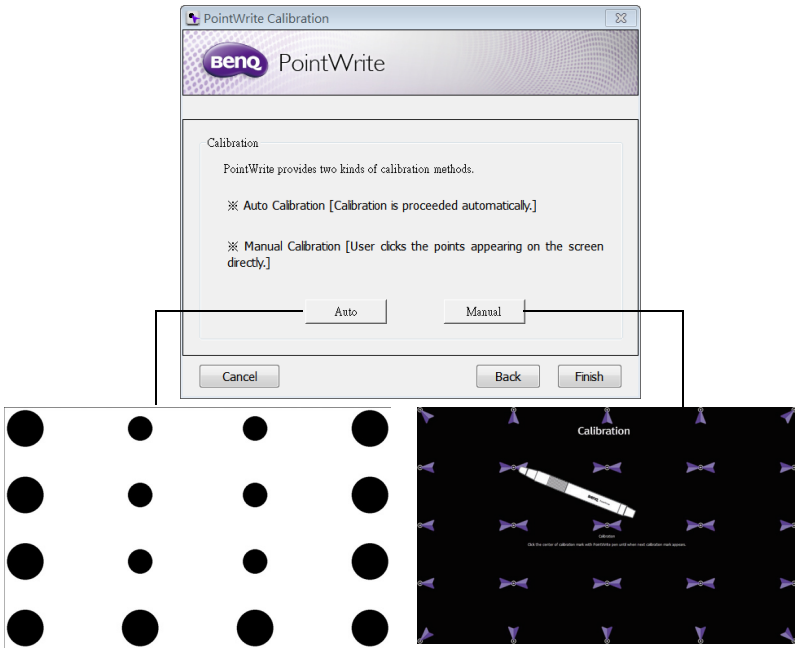
• Upper side conflict



• Left side conflict

PointWrite Calibration


PointWrite provides two kinds of calibration methods: auto calibration and manual calibration.




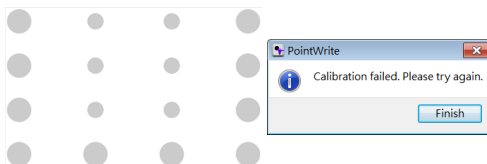
Auto calibration: click on and the calibration process will run automatically.

When you choose this method, white image is shown on the screen and the pattern image is displayed.

Manual calibration: Click on and the calibration window will be projected on the screen.

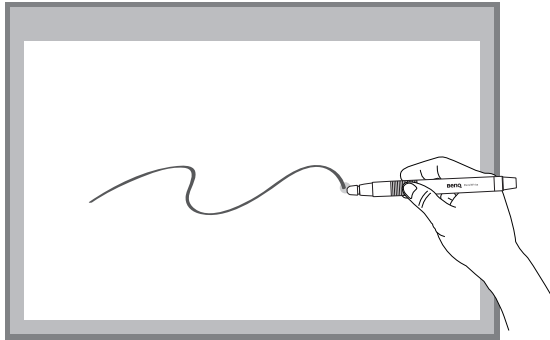
Use the PointWrite pen to click on the center of calibration cursor  immediately after it appears. Then the next cursor will display. Repeat this process until the last calibration cursor disappears.

 **Caution:** In rare circumstances, auto calibration may fail or accuracy may be low. In this case, please execute the manual calibration.



Calibration complete

After completing calibration, you can use PointWrite pen as mouse function or launch QWrite software for writing and annotation.



Specifications

Item	Description
PointWrite	
Model name	PW21U
Technology	Image Processing Technology
Refresh Rate	60Hz
Response Time	Max. 0.016 sec
Auto Calibration	Yes
Calibration Accuracy ^a	Max. +/-2 Pixel
Operating Distance	Follow Projector Specification
Multi-User	4 pen simultaneously
Multiple Operation	2 Units
PC Connection	Mini USB
Power Source	PC USB Power
Max USB Cable Length	15 m (5 m USB cable + Repeater)
OS Supported	Windows: WinXP, Vista, 7, 8, 10 Mac: Snow Leopard or later
Storage Temperature	-20°C ~ 60°C
Operating Temperature	5°C ~ 40°C
Dimensions	93 mm x 38.7 mm x 44 mm
Weight	50 g
Compatible model	Selected BenQ Ultra short throw models (Throw ratio 0.23 ~ 0.3)
PointWrite Pen	
Power	AAA Battery*2
Length	176 mm
Diameter	15 mm
Weight	35 g
Color	White

^a. The accuracy of auto calibration will be impacted depending on your environment.