



GAME RULES

- 1 Choose a challenge. Place the pieces as shown in the challenge, in the correct position and orientation:
 - The orientation of each puzzle piece is important. Each individual jigsaw piece has two indented sides and two protruding sides.
 - For clarity, each puzzle piece is shown in the challenges as a solid colour. The actual pieces are hollow.
 - Most challenges show the final position of the puzzle pieces somewhere within the 6x6 grid (shown in grey). Some harder challenges only show the relative position of two or three adjacent puzzle pieces, but their exact position within the completed 6x6 grid is not shown.
- 2 Complete a 6x6 square using the remaining pieces.
- 3 There is only one solution, found at the end of the challenge booklet.

You can download extra challenges on our website:

<https://www.smartgames.eu/uk/one-player-games/iq-matrix#downloads>

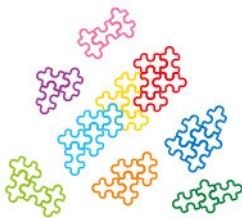
These bonus challenges will require you to complete different shapes, other than the 6x6 square grid. These challenges often will have multiple solutions.



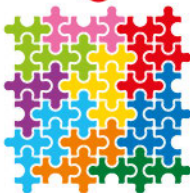
1



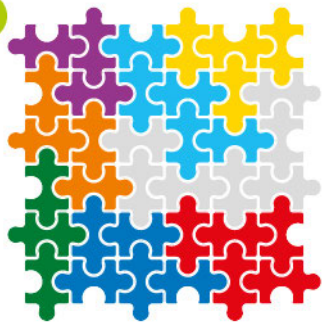
2



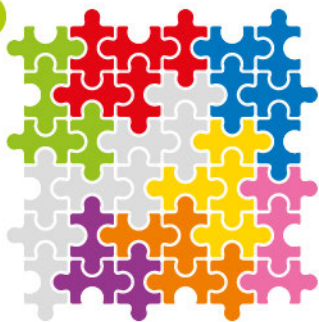
3



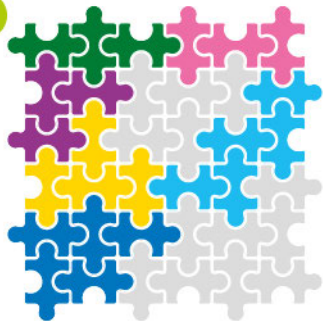
1



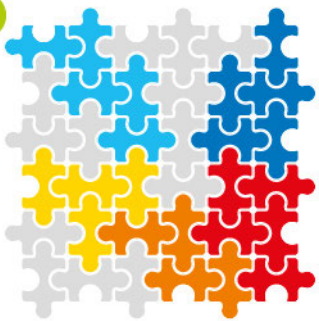
2



3



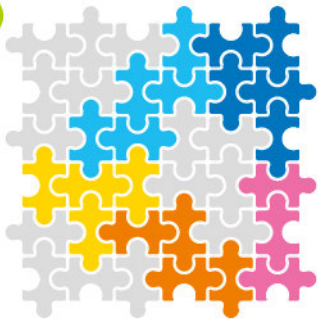
4

**STARTER**

5



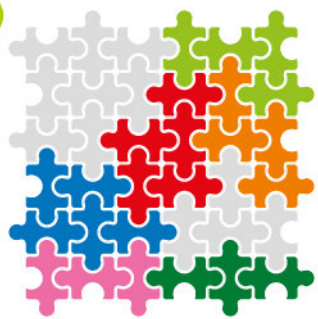
6



7



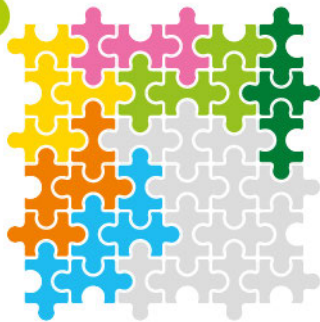
8



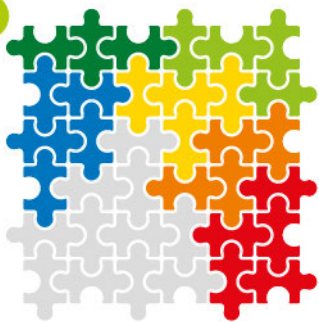
STARTER



9



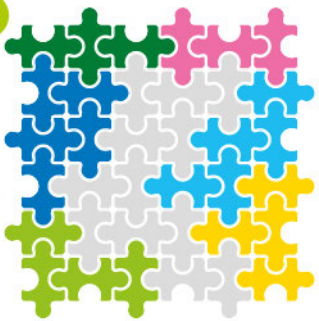
10



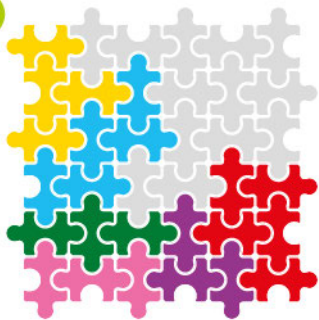
11



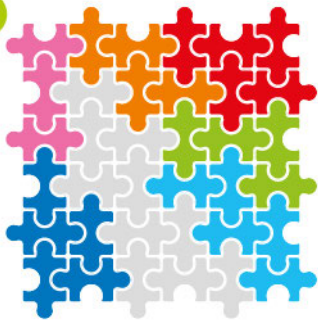
12

**STARTER**

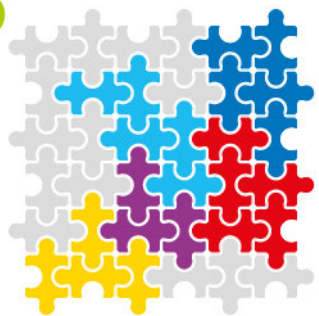
13



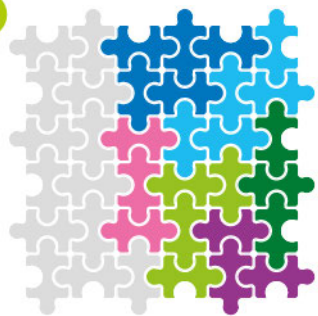
14



15



16



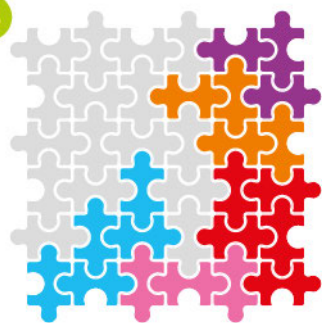
STARTER



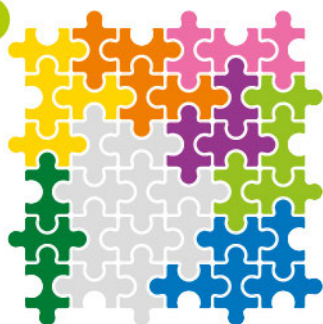
17



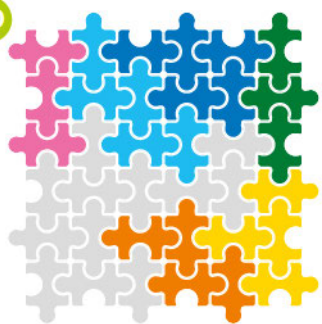
18



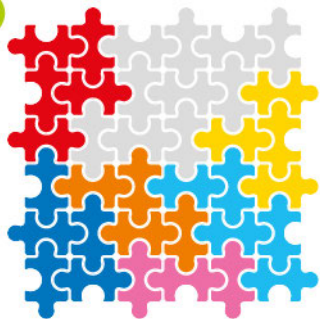
19



20

**STARTER**

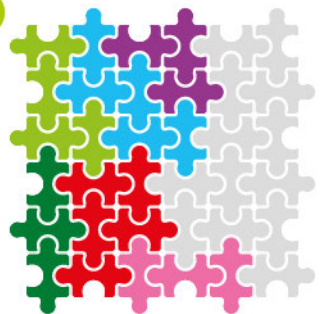
21



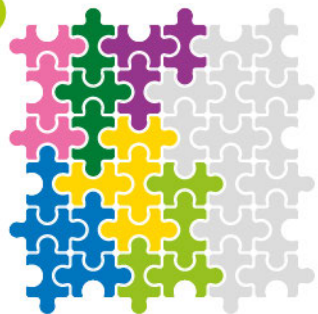
22



23



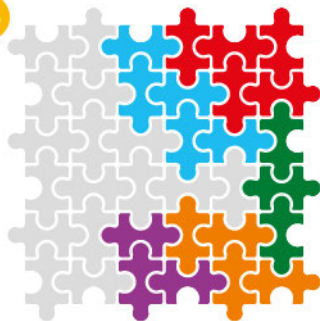
24



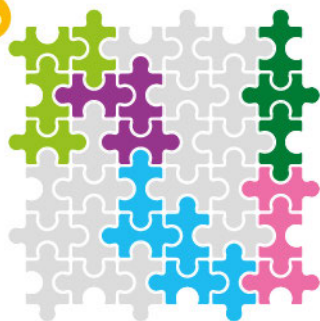
STARTER



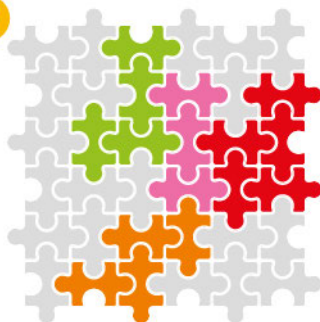
25



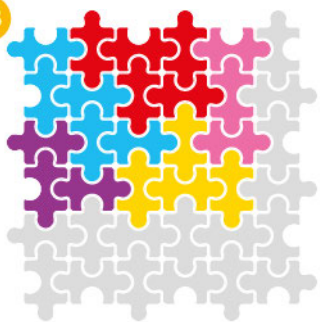
26



27

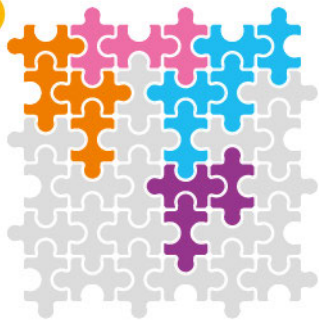


28

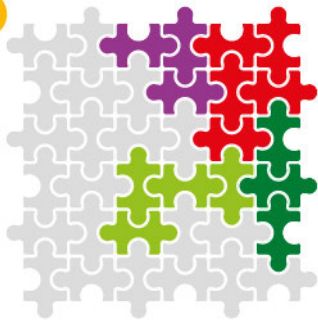


JUNIOR

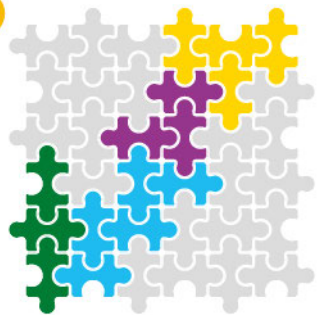
29



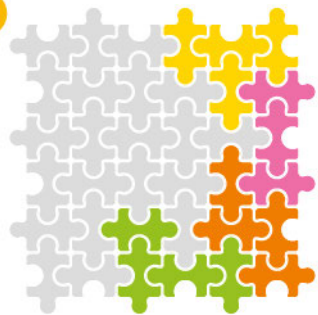
30



31



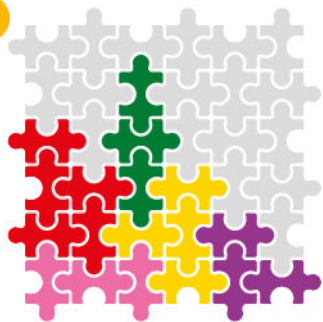
32



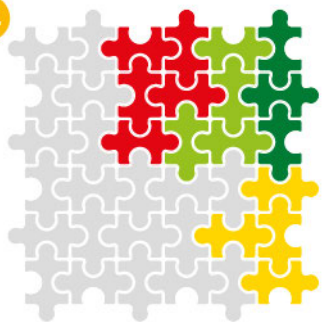
JUNIOR



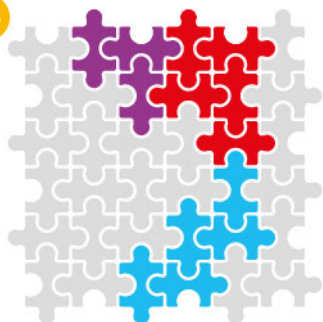
33



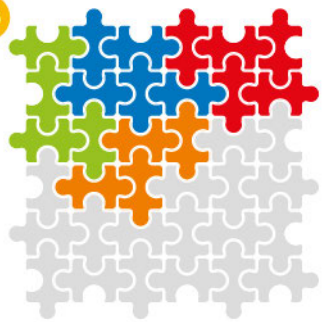
34



35

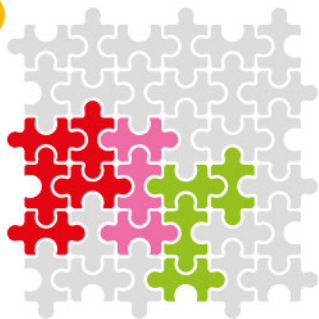


36



JUNIOR

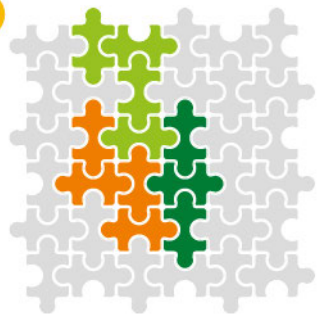
37



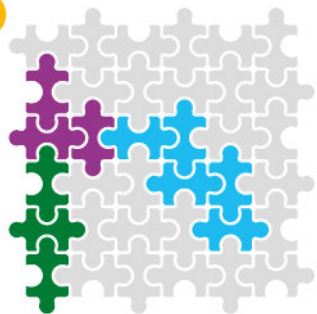
38



39



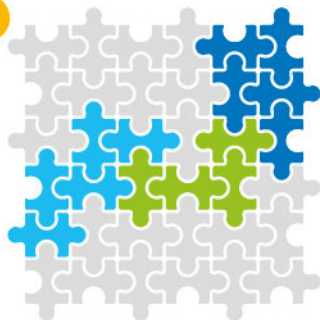
40



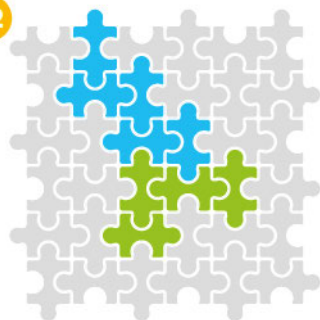
JUNIOR



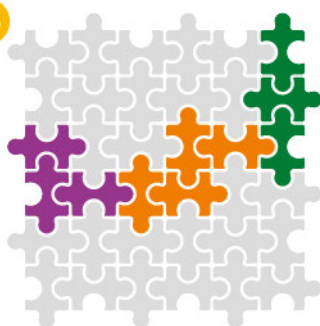
41



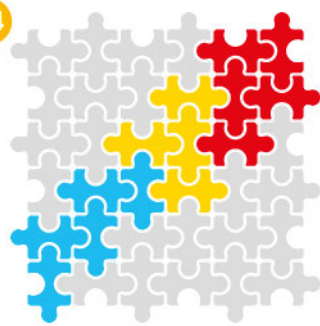
42



43

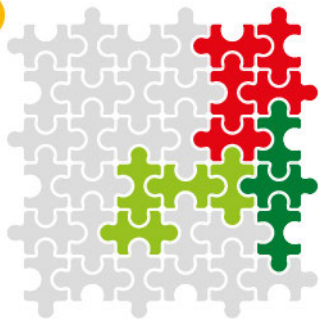


44

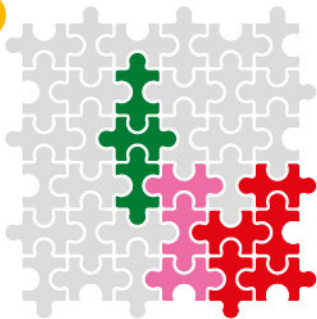


JUNIOR

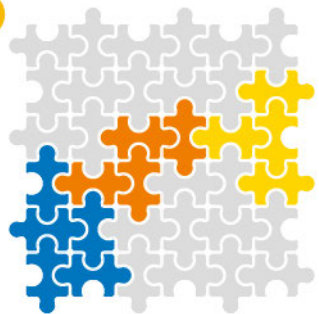
45



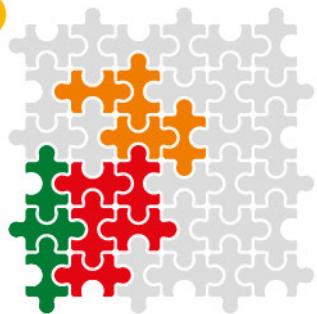
46



47



48



JUNIOR



49



50



51



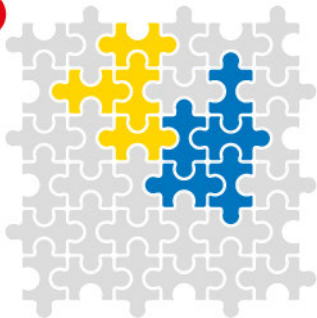
52

**EXPERT**

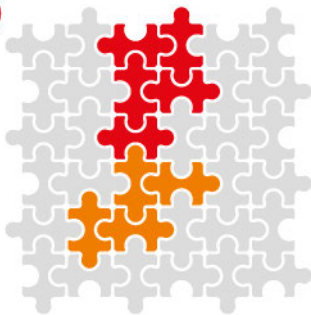
53



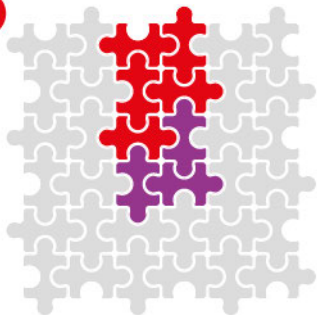
54



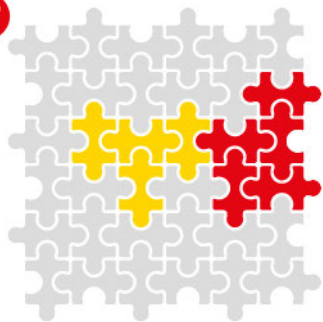
55



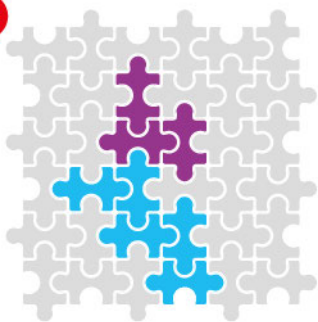
56

**EXPERT**

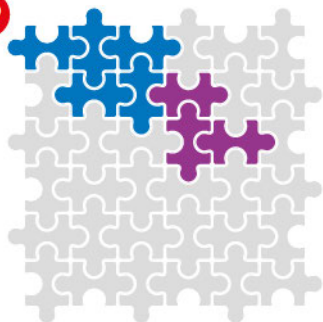
57



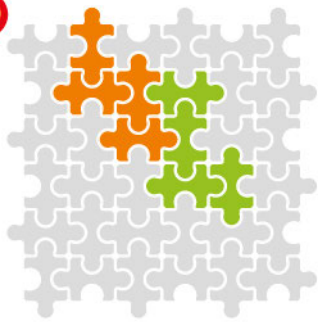
58



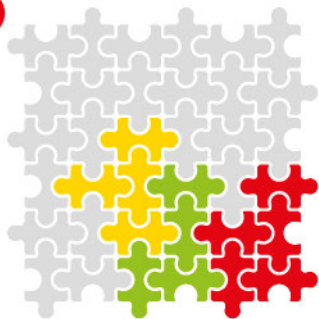
59



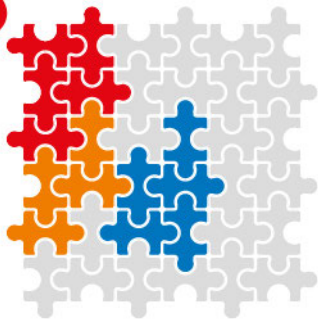
60

**EXPERT**

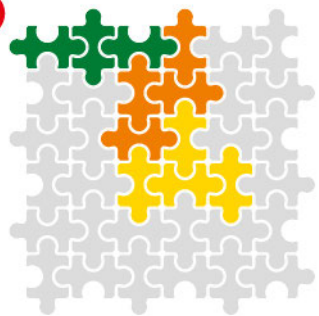
61



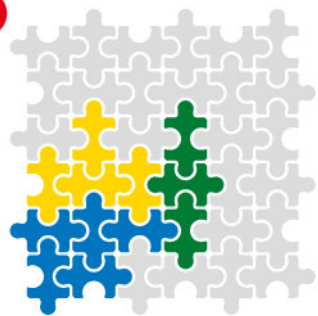
62



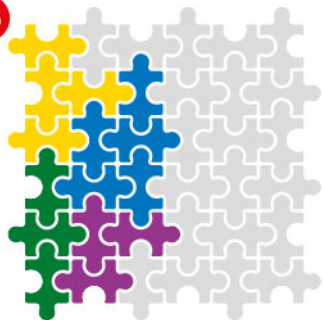
63



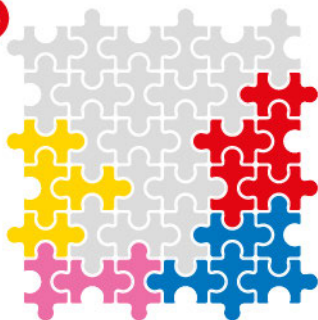
64

**EXPERT**

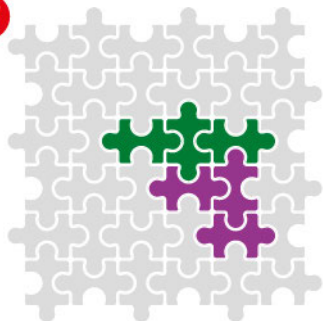
65



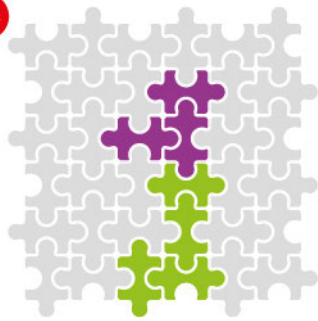
66



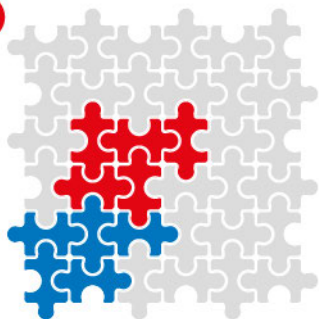
67



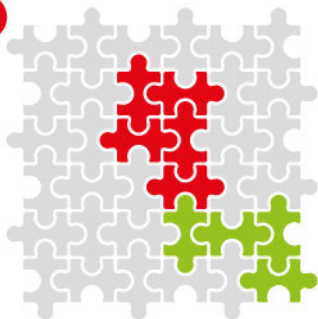
68


EXPERT

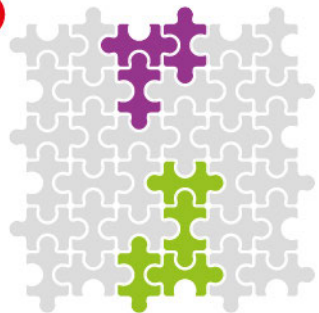
69



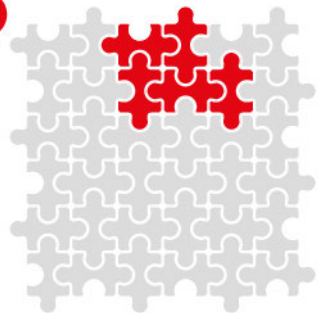
70



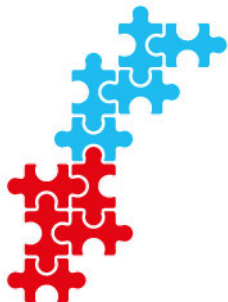
71



72

**EXPERT**

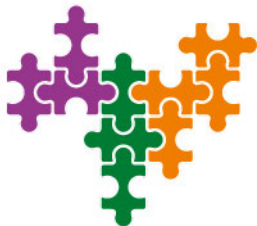
73



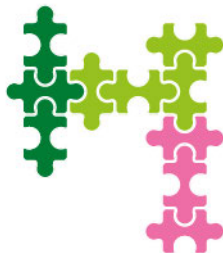
74



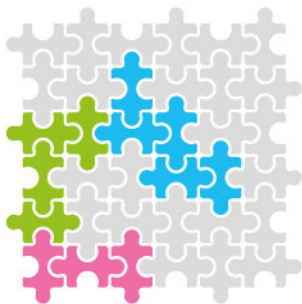
75



76

**MASTER**

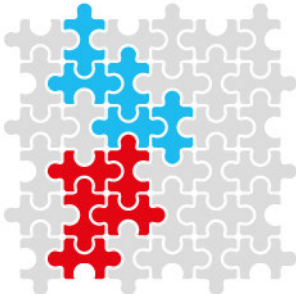
77



78



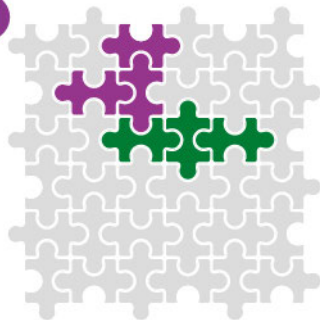
79



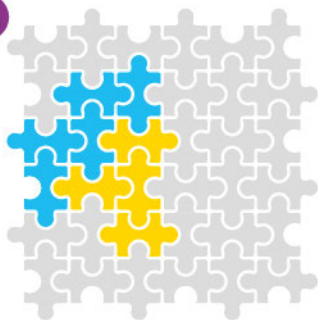
80

**MASTER**

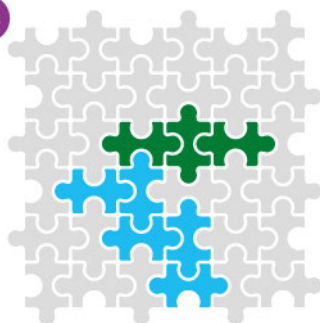
81



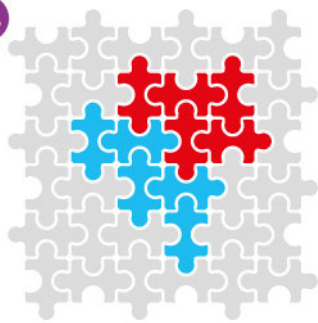
82



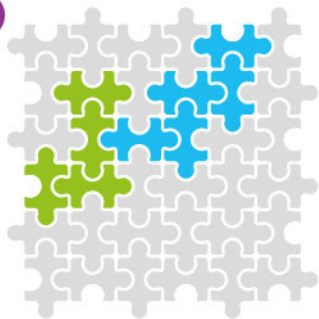
83



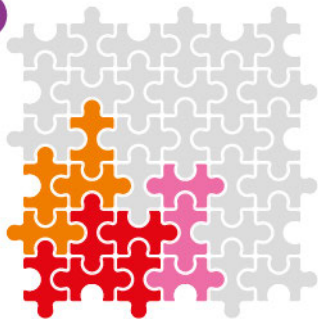
84

**MASTER**

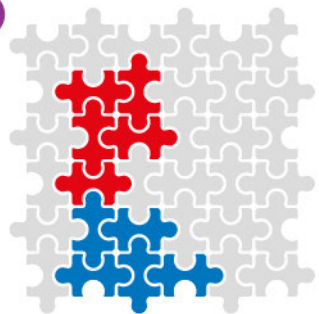
85



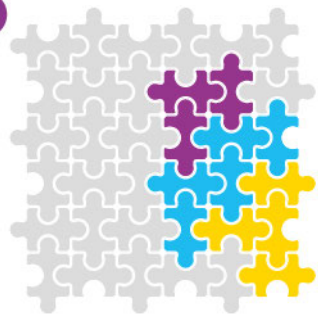
86



87



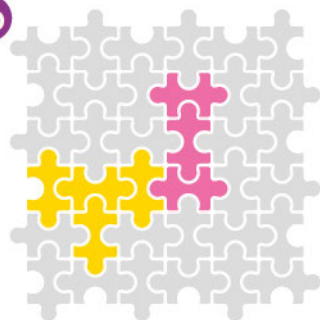
88

**MASTER**

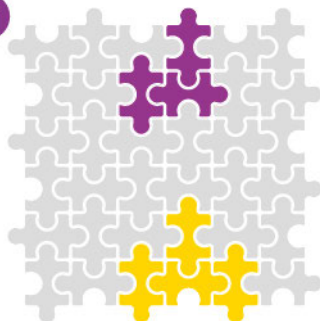
89



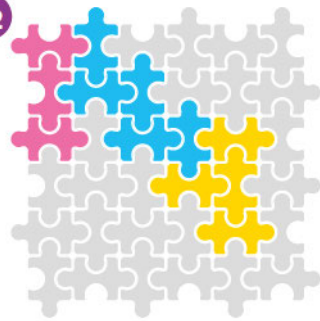
90



91

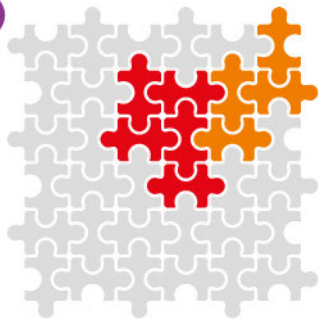


92



MASTER

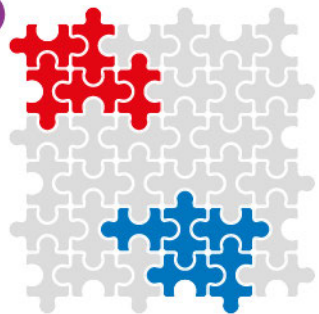
93



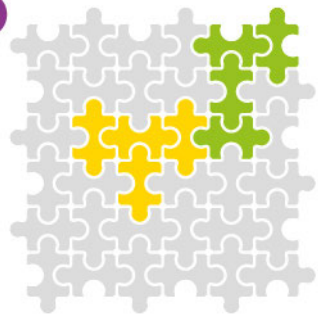
94



95



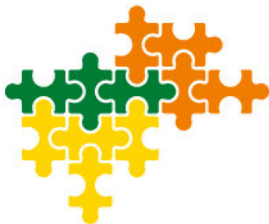
96

**MASTER**

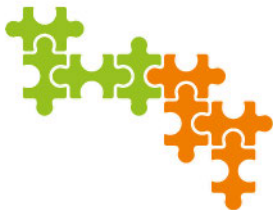
97



98



99

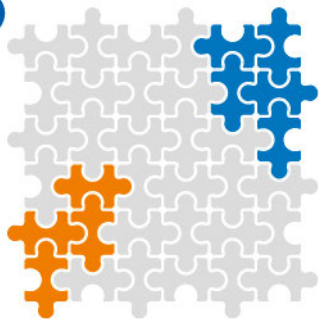


100

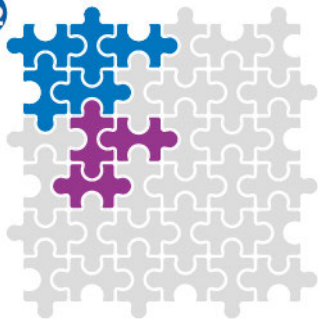


WIZARD

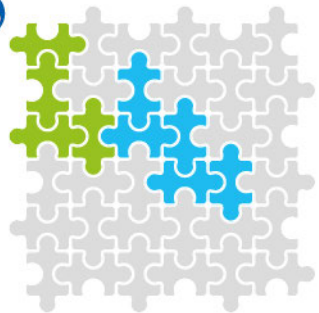
101



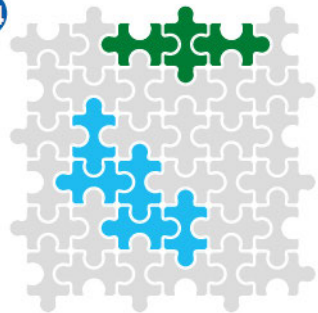
102



103



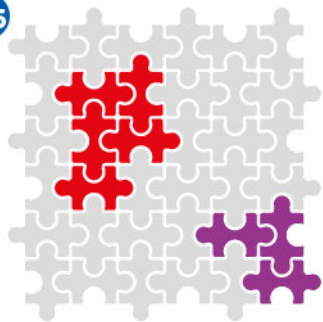
104



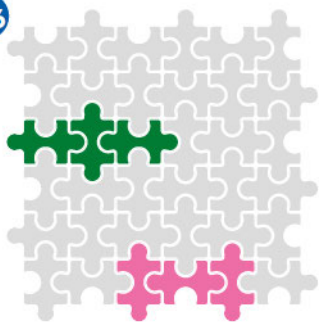
WIZARD



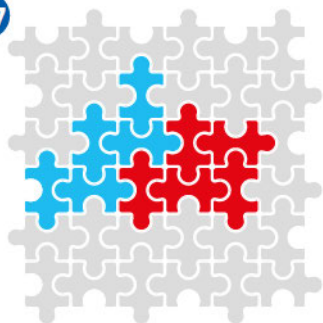
105



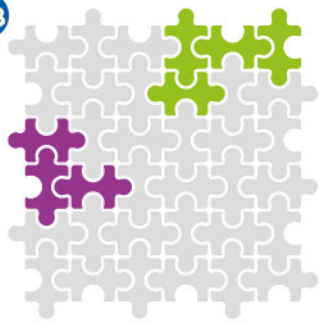
106



107

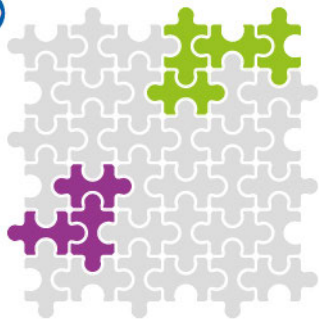


108

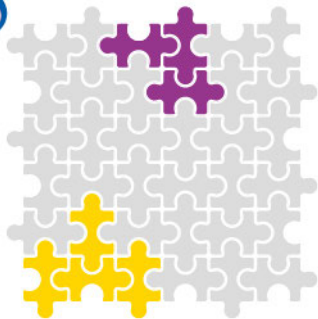


WIZARD

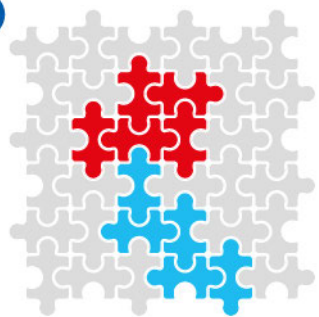
109



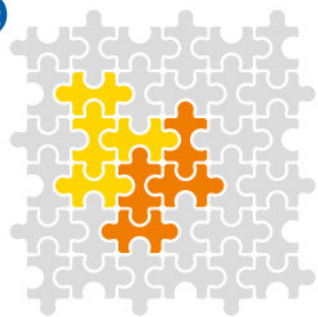
110



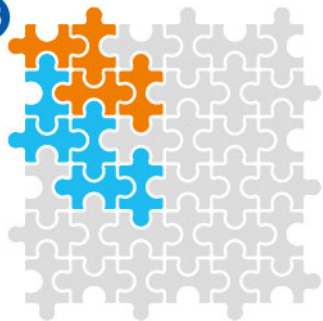
111



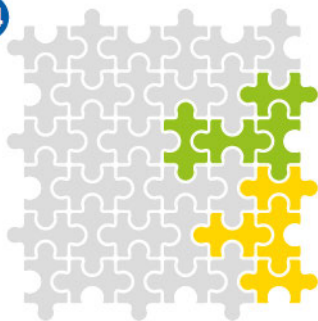
112



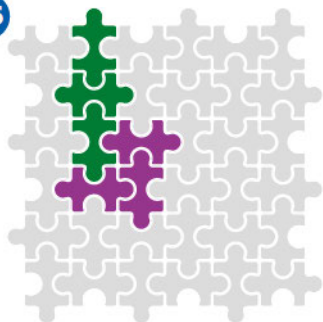
113



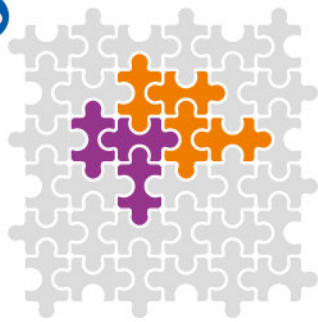
114



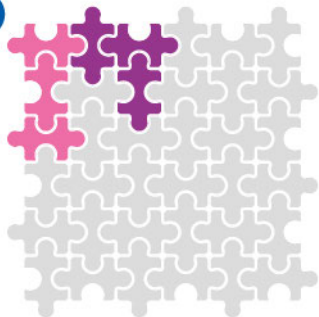
115



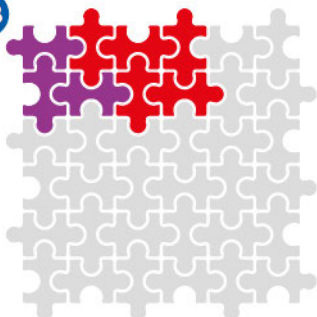
116

**WIZARD**

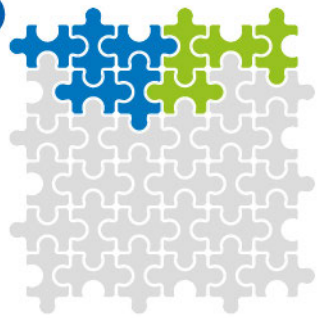
117



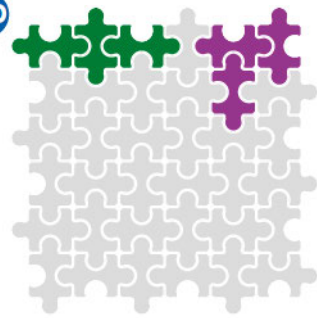
118

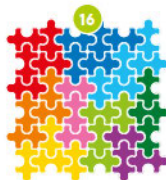
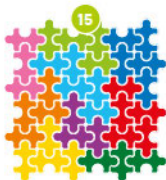
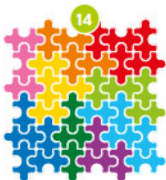
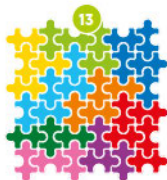
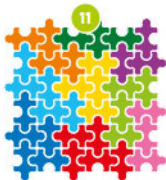
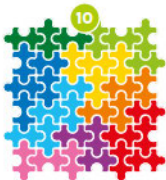
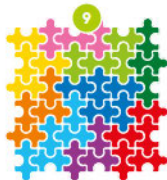
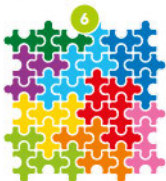
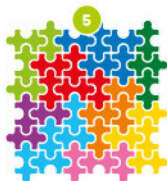
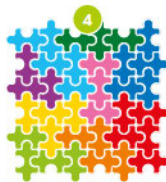
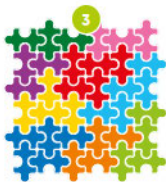
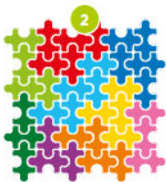
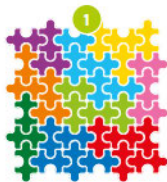


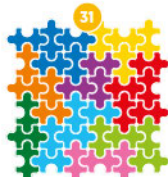
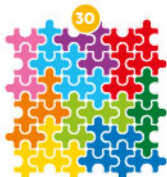
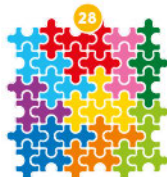
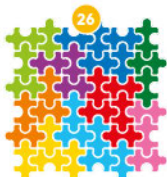
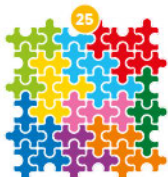
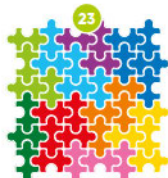
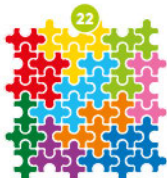
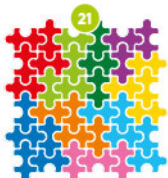
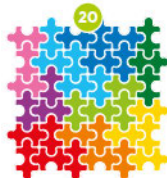
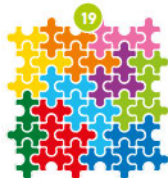
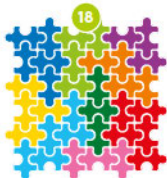
119

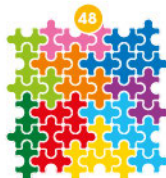
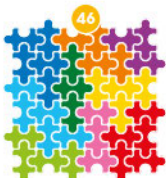
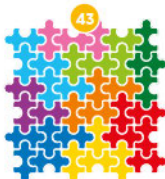
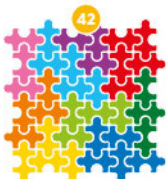
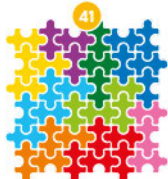
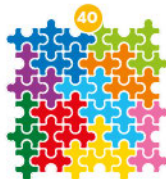
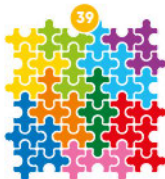
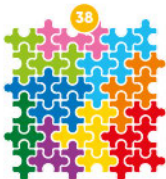
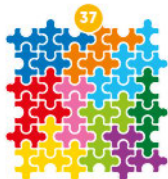
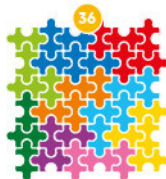
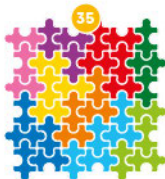
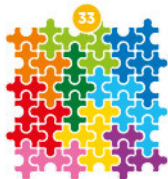


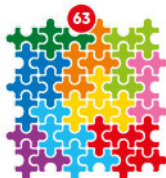
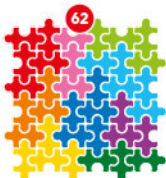
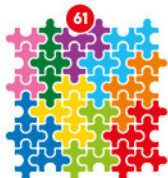
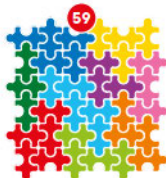
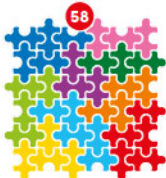
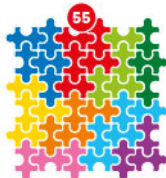
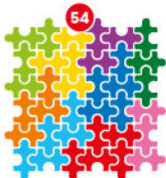
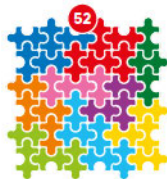
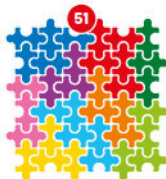
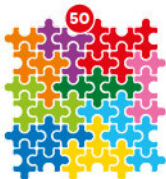
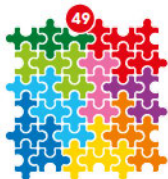
120

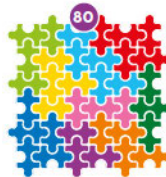
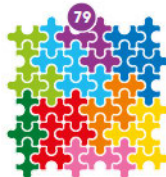
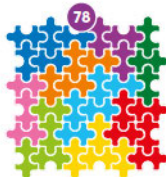
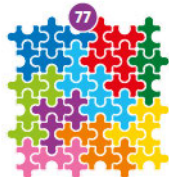
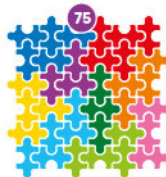
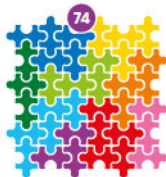
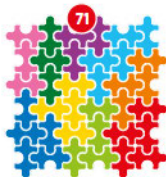
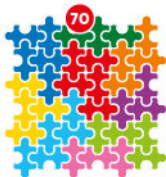
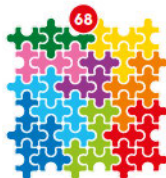


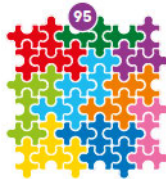
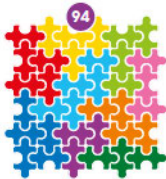
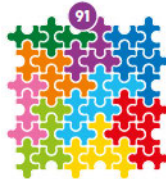
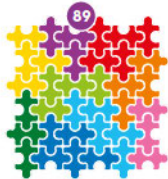
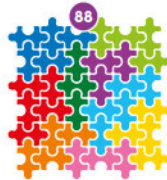
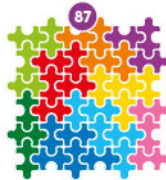
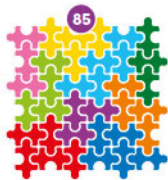
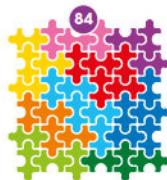
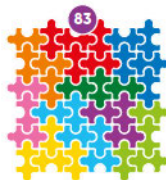
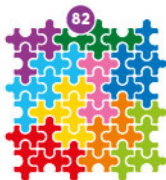
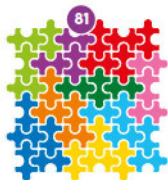


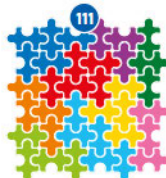
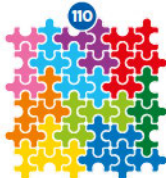
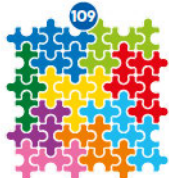
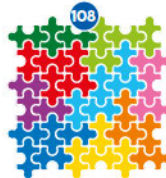
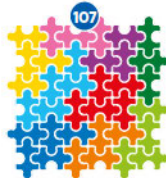
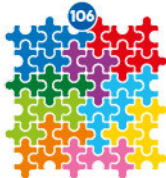
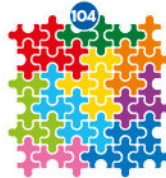
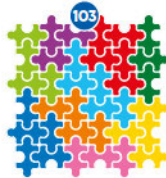
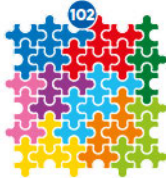
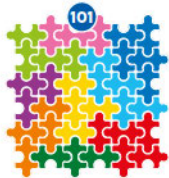
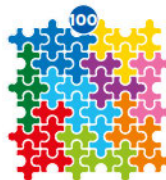


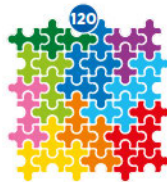
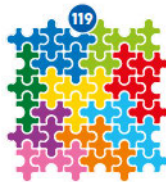
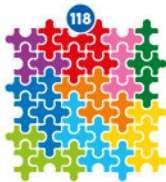
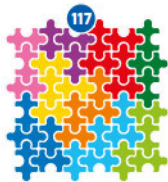
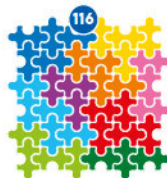












SG 308-A



SG 308-B



SG 308-C



SG 308-D



SG 308-E



SG 308-F



SG 308-G



SG 308-H



SG 308-I



© 2023 Concept, game design & artwork:
SMART - Belgium. All rights reserved.
Designer: Raf Peeters
Original product name: IQ Matrix
Manufacturer: SMART nv.
Neerveld 14, 2550 Kontich, Belgium
Contact us: www.smartgames.eu/contact

ad 20240619b

Made in China

